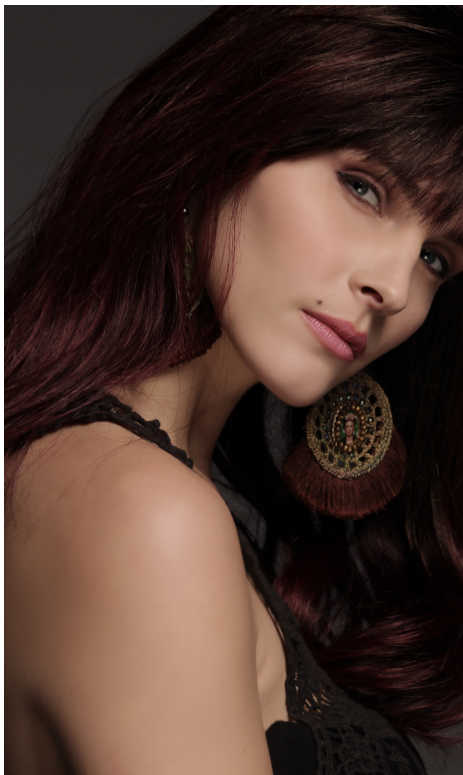




Sherri Renée
THE FINE ART OF ALTERNATIVE HAIR COUTURE

STOCK DESIGNS

LUXE



LUXE™ STOCK COLLECTION

Top Design

- ☼ **French Flash™ (P-3), Flash Grande™ (P-4,), French Fall™ (P-7), Fall Grande™ (P-8)**
- Dimensions | see Stock Pricelist or Measurements by Design for dimensions on each
- Hair Length | 15-16" Hair Type | Euroblend
- Front Hairline | 1/8" Folded French Lace heavily undervented with bleached knots
- Top Panel Ventilation | Soft, Silk Trompel'Oeil™ scalp replica (French Drawn)
- Base | Parisian Silk and French Lace
- Density | Light to Medium
- Curl /Wave Pattern | 25MM Natural Body
- 3D Color Modeling | Chiaroscuro

Full Design

- ☼ **Luxe Aria™ Full**
- Dimensions | CIR=21", FN=14.875", SCS=12", EE=11.25", TT=15.6", NAPE=4.75"
- Hair Length | 15-16" Hair Type | Euroblend
- Front Hairline | 1/2" Open E-2 Lace (Extended) with bleached knots
- Top Panel Ventilation | Soft, Silk Trompel'Oeil™ scalp replica (French Drawn)
- Base | PU, Organic Stretch Cotton, Silicone, Elastic Darts, Folded/Undervented Nape Lace
- Density | Medium
- Curl /Wave Pattern | 25MM Natural Body
- 3D Color Modeling | Chiaroscuro

LUXE™ STOCK COLLECTION

The **Luxe™ Collection**, by Sherri Renée, combines many of our revered features and luxurious Euroblend™ hair contributing unlimited possibilities and customized solutions designed for our more affluent clientele.

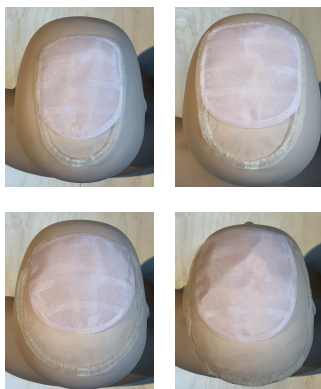
Each design in our **Luxe Collection** utilizes **Chiaroscuro 3D Color Modeling™** ~ the visual discipline of using thematic hues (colors) and graduated values (light and shadow) observed from nature ~ to achieve a more profound sense of realism, tonal unity, and color dimension. Color is applied to the hair's surface as if an imaginary light source (the sun) is gently shining around the face. Brighter color values (light) reside in the front, temple, and top - then naturally graduate to darker, less intense colour values, traveling back towards the crown, sides and, nape (shadow). This analytical division of light and shadow mimics the three-dimensional volume and form necessary to impart realism to alternative hair.

Each **Luxe™** design features our soft Parisian silk, french drawn top - **Silk Trompe L'Oeil™ scalp replica** - which utilizes "return hairs" to support more lift and hold. Single hairs are individually knotted into a french lace fabric and delicately threaded through a Parisian silk fabrique custom tinted to match your scalp color and tone. We further covet our natural top with a beautiful under-layer of Parisian silk and anti-slip detailing.

Our collection features our luxurious **Euroblend** hair in 15-16" length providing unlimited options for medium to long hairstyles.



LUXE ARIA™ BASE



P-3, P-4, P-7, P-8 BASE

LUXE STOCK COLORS (From Parisian Color Ring)

- ☼ OBSIDIAN
- ☼ EXPRESSO
- ☼ CHESTNUT
- ☼ COFFEE
- ☼ CARAMEL
- ☼ LATTE
- ☼ LT ASHE
- ☼ LT BLONDE