



Sherri Renée
THE FINE ART OF ALTERNATIVE HAIR COUTURE

STOCK DESIGNS

**YOUTH
INSPIRED**

YOUTH INSPIRED™ STOCK COLLECTION

Top Design

- ☼ **Youth Cut-A-Way™** (*clip, tape or bond*)
 - Dimensions | 8"W X 9.25" L
 - Hair Length | 17.5" Hair Type | Grade "A" Remy
 - Front Hairline | 1/2" Open E-2 Lace (*Extended*) with bleached knots
 - Top Panel Ventilation | Soft, Silk Trompel'Oeil™ scalp replica (*French Drawn*)
 - Base | PU and French Lace
 - Density | Light to Medium
 - Curl /Wave Pattern | 25MM Natural Body
 - 3D Color Modeling | Sfumato

Full Design

- ☼ **Youth Aria™ Full**
 - Dimensions | CIR=19.75", FN=13", SCS=10.75", EE=11.25", TT=14.75", NAPE=4"
 - Hair Length | 13.5"
 - Front Hairline | Open 1/2" E-2 Lace (*Extended*) with bleached knots
 - Top Panel Ventilation | Soft, Silk Trompe L'Oeil scalp replica (*French drawn*)
 - Base | PU, Organic Stretch Cotton, Silicone, Elastic Darts, Folded/Undervented Nape Lace
 - Density | Light to Medium
 - Curl /Wave Pattern | 25MM Natural Body
 - 3D Color Modeling | Fsumato

YOUTH INSPIRED™ STOCK COLLECTION

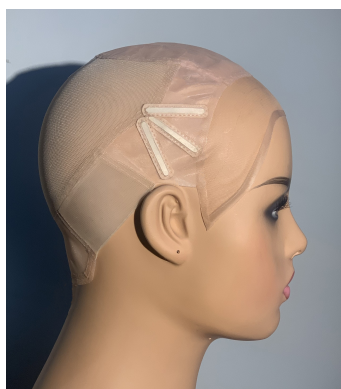
The **Youth Inspired™ Collection**, by Sherri Renée, addresses the unique concerns of a **younger or more petite wearer** ~ *inherently organic and offering a more youthful appearance*. Less volume (density), subtle value (color) shifts, and proportional form are all equally importance to a younger, petite or active wearer. This collection features a highly customizable top design and a realistic full design.

The **Youth Cut-A-Way™** features a unique cut-a-way base system easily modified to reflect changes in hair loss, such as with alopecia areata, trichotillomania, or telogen effluvium. Leave as is or cut-a-way excess size, material, and density. An extremely lightweight base can be taped, clipped, or bonded.

The **Youth Aria™ Full** design features a petite cap that is self-adjusting due to the use of an organic, stretch cotton body and anti-slip, elastic darts and detailing that help to conform and secure to an individual's unique head shape.

Each **Youth Inspired™** design features our soft, Parisian silk, french drawn top ~ Silk Trompe L'Oeil scalp replica for undetectable realism even over hair. Single hairs are individually knotted into a french lace fabric and delicately threaded through a Parisian silk fabrique to help covet the knots for durability.

We have adapted the Renaissance painting technique, **Sfumato** ~ *the blurring or softening of sharp outlines in painting* ~ by showcasing subtle and gradual movement of one color tone into another. A "smokey", sun-kissed appearance is achieved by applying soft shifts in color, values, and tones. The effect is indistinct, misty, and organic, thus, reflecting normal oxidation occurring in nature.



YOUTH ARIA™ BASE



YOUTH CUT-A-WAY™ BASE

YOUTH INSPIRED STOCK COLORS (From Parisian Color Ring)

- ☼ OBSIDIAN
- ☼ EXPRESSO (*also available in SoftTouch*)
- ☼ CHESTNUT
- ☼ COFFEE
- ☼ CARAMEL
- ☼ LATTE
- ☼ LT ASHE
- ☼ LT BLONDE